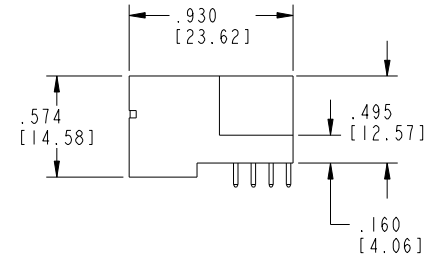
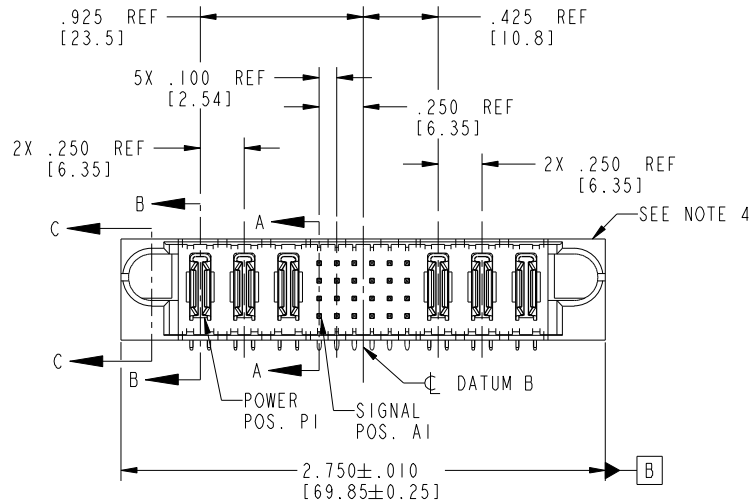
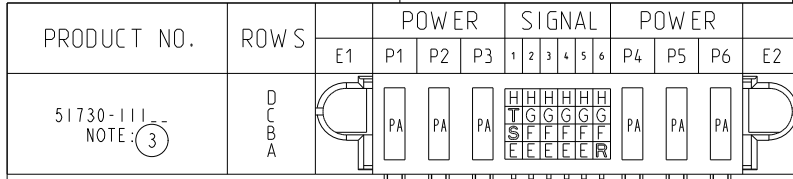


Tous droits strictement reserves. Reproduction ou communication a des tiers interdite sous quelque forme que ce soit sans autorisation écrite du propriétaire. Propriete de c FCI. Droits de reproduction FCI.



All rights strictly reserved. Reproduction or issue to third parties in any form whatever is not permitted without written authority from the proprietor. Property of FCI. Copyright FCI.



CODE	DIM "M" MATING LENGTH	CONTACT TYPE
H	.220 [5.59]	SIGNAL
E	.220 [5.59]	SIGNAL
G	.220 [5.59]	SIGNAL
F	.220 [5.59]	SIGNAL
PA	N/A [N/A]	POWER
R	.270 [6.86]	SIGNAL
S	.270 [6.86]	SIGNAL
T	.270 [6.86]	SIGNAL

mat'l code				SEE NOTE 2		tolerances unless otherwise specified		CUSTOMER		 www.fciconnect.com	
ltr	ecn no.	dr	date	linear	.XX±.01/0.X±0.3		COPY		title		
A	DG05-0118	GuoJM	05/20/05		.XXX±.005/0.XX±0.13		projection		3P + 24S + 3P		
B	DG05-0119	GuoJM	05/26/05	angles	.XXX±.002/0.XXX±0.051				RIGHT ANGLE SOLDER HEADER		
C	DG05-0415	GuoJM	10/25/05		0°±2°		INCH/MM		product family		code
D	DG08-0253	SH	09/13/08	dr	JM Guo	05/20/05	scale		PwrBlade	213	
				enr	SLuo	05/20/05	1:1		size	sheet	
				chr	VICTOR LIN	05/20/05	A		dwg no	1 of 4	
				appd	JOSEPH HSIA	05/20/05			51730-111		
sheet index	revision sheet	D	D	D	D				cage code		
		1	2	3	4				22526		

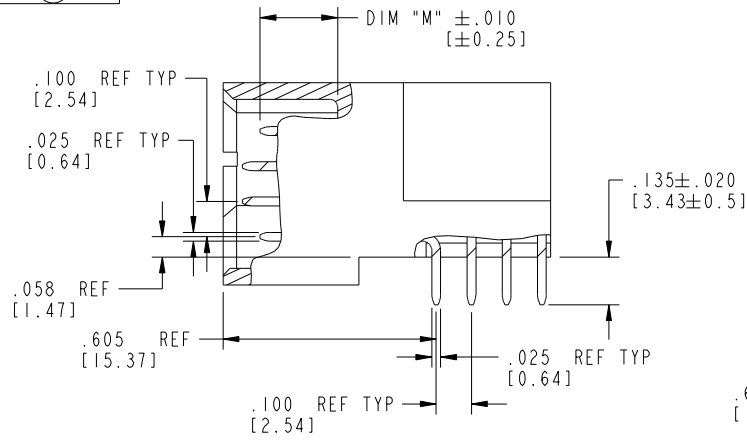
Pro/E

cage code 22526

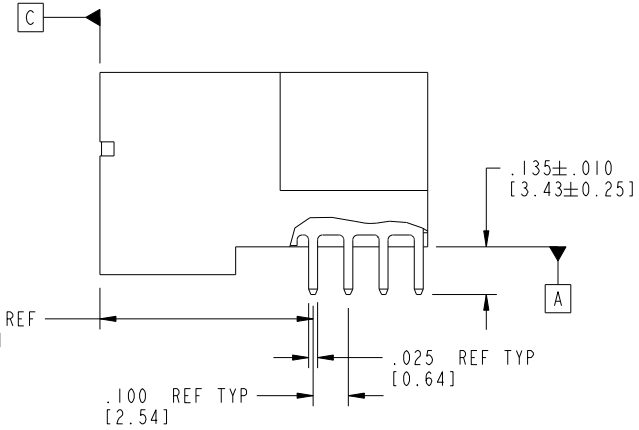
Tous droits strictement réservés. Reproduction ou communication à des tiers interdite sous quelque forme que ce soit sans autorisation écrite du propriétaire. Propriété de c FCI. Droits de reproduction FCI.

All rights strictly reserved. Reproduction or issue to third parties in any form whatever is not permitted without written authority from the proprietor. Property of FCI. Copyright FCI.

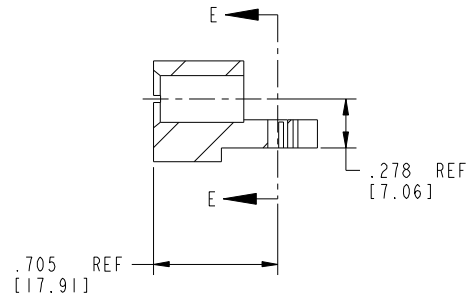
PRODUCT NUMBER
51730-111
NOTE: (3)



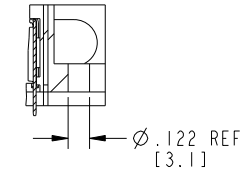
BROKEN-OUT SECTION A-A
SCALE 2:1



BROKEN-OUT SECTION B-B
SCALE 2:1



SECTION C-C



PARTIAL SECTION E-E

mal't code		SEE NOTE 2		tolerances unless otherwise specified		CUSTOMER		FCI	
ltr	ecn no.	dr	date	linear	.XX±.01/0.X±0.3	COPY		www.fciconnect.com	
D				linear	.XXX±.005/0.XX±0.13	projection		title 3P + 24S + 3P	
				angles	.XXX±.0020/0.XXX±0.051	INCH/MM		RIGHT ANGLE SOLDER HEADER	
				dr	0°±2°	scale		product family PwrBlade code 213	
				enr	JM Guo 05/20/05	1:1		size dwg no 213	
				chr	SLuo 05/20/05	A		sheet 2 of 4	
				appd	VICTOR LIN 05/20/05			51730-111	
					JOSEPH HSIA 05/20/05				
sheet index	revision sheet								

cage code 22526

Pro/E

Tous droits strictement réservés. Reproduction ou communication à des tiers interdite sous quelque forme que ce soit sans autorisation écrite du propriétaire. Propriété de c FCI. Droits de reproduction FCI.

All rights strictly reserved. Reproduction or issue to third parties in any form whatever is not permitted without written authority from the proprietor. Property of FCI. Copyright FCI.

PRODUCT NUMBER
51730-1111--
NOTE ③

NOTES:

1. DIMENSIONS AND TOLERANCES ARE IN ACCORDANCE WITH ASME Y14.5M, 1994 UNLESS OTHERWISE SPECIFIED.

CONNECTOR NOTES:

②. HOUSING MATERIAL: UL 94 V-0 GLASS FILLED

HIGH-TEMP THERMOPLASTIC
POWER CONTACT MATERIAL: COPPER ALLOY
SIGNAL PIN MATERIAL: COPPER ALLOY

3. PLATING:

▲ SEE ITEM 1 & 2 IN PRINT 10064183 FOR PLATING SPEC OF 51730-1111 AND 51730-1111LF RESPECTIVELY

④. MANUFACTURER'S NAME, P/N, AND DATE CODE TO APPEAR ON THIS SURFACE.

5. PRODUCT SPECIFICATION GS-12-149.
APPLICATION SPECIFICATION BUS-20-067.
6. PACKAGED IN TRAYS.

PCB NOTES:

7. ALL HOLE DIAMETERS ARE FINISHED HOLE SIZE.

⑧. MOUNTING HOLES, WHERE APPLICABLE, ARE UNPLATED.

⑨. $\varnothing .0453 \pm .0010$ [1.151 \pm 0.025] DRILLED HOLES PLATED WITH .0003 [0.008] MIN SnPb OVER .001 [0.03] TO .003 [0.08] Cu PLATING TO ACHIEVE $\varnothing .040 \pm .003$ [1.02 \pm .07] HOLE.

⑩. "DIM XXX" TO BE DETERMINED BY THE CUSTOMER.

⑪. CONNECTOR KEEP-OUT ZONE.

12: A ▲ SYMBOL WILL BE NEXT TO ANY DIMENSION, VIEW, OR NOTE WHICH HAS BEEN MODIFIED WITH CURRENT DRAWING VERSION.

mat'l code				SEE NOTE 2		tolerances unless otherwise specified		CUSTOMER		FCI		www.fciconnect.com	
ltr	ecn no.	dr	date	linear	.XX±.01/0.X±0.3		COPY		projection	title			
D					.XXX±.005/0.XX±0.13		INCH/MM			3P + 24S + 3P			
				angles	.XXX±.002/0.XXX±0.051		INCH/MM		RIGHT ANGLE SOLDER HEADER				
					0°±2°		scale		product family		PwrBlade		code
				dr	JM Guo	05/20/05	1:1		size		dwg no		sheet
				enr	SLuo	05/20/05	A		51730-111		4 of 4		
				chr	VICTOR LIN	05/20/05							
				appd	JOSEPH HSIA	05/20/05							
sheet index	revision sheet												

cage code 22526

Pro/E